

ITEM # 1094 CONCEALED MOUNTING



1094 SURECLOSE HYDRAULIC DOOR CLOSER

- Powerful gas-loaded hydraulic cylinder guarantees controlled closure.
- Exposed and concealed mounting models
- Patented solid steel enclosed housing and bend-resistant hook assure long wear in heavy use.
- Extra-wide hook ensures roller pick-up and overcomes alignment problems.
- Life-cycle tested to operate reliably even after a half-million closures.
- Easily replaces any conventional door closer.
- Kason walk-in hinges and latches where self-closing doors with controlled closure are needed.
- Mounting slots on hook allow for easy adjustment to compensate for door sag, keeping roller aligned with hook for proper function.

1094S DUAL-SPEED CLOSER

All the features of the 1094 Sure-Close, with the additional benefit of a specially developed snubbing mechanism. Initial fast closing action allows unit to withstand slamming force, while secondary, slower action provides gradual closing to lessen final impact.

SPECIFICATIONS

MATERIAL:
Heavy gauge steel. Housing and hook also available in stainless steel

FINISH:
Polished or brushed chrome, stainless steel, or powder coat

MOUNTING:
Holes drilled for No. 10 (5.0 mm) screws (included)

PACKAGING:
Closers and hooks packaged separately; 24 to a carton

WEIGHT:
See order information

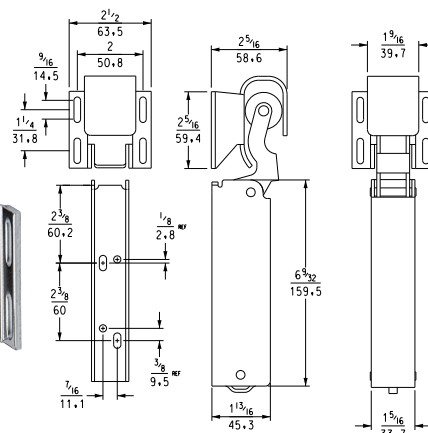


ITEM # 1094 EXPOSED MOUNTING

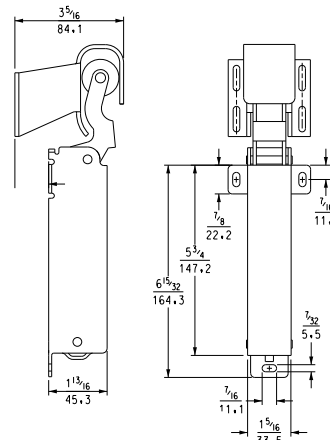


U.S. Trademark: 3,212,100
Hook sold separately.

CONCEALED FLUSH



EXPOSED OFFSET



Model No.	Item	Finish	Wgt/Carton
11094000002	Closer, Exposed Mounting	Brushed Chrome	35 lb. (15.6kg)
11094000003	Closer, Exposed Mounting	Polished Chrome	35 lb. (15.6kg)
11094000012	Closer, Concealed Mounting	Brushed Chrome	35 lb. (15.6kg)
11094000013	Closer, Concealed Mounting	Polished Chrome	35 lb. (15.6kg)
11094500003	Dual Closer, Exposed Mounting	Polished Chrome	35 lb. (15.6kg)
11094500012	Dual Closer, Concealed Mounting	Brushed Chrome	35 lb. (15.6kg)
11094S00013	Dual Closer, Concealed Mounting	Polished Chrome	35 lb. (15.6kg)
11094000093	Stainless Steel Closer, Concealed Mounting	Satin	35 lb. (15.6kg)
11094000026	Adjustable Wide-Hook, Flush to 3/4" (0.0-19.1 mm) Offset	Polished Chrome	10 lb. (4.5 kg)
11094000027	Adjustable Wide-Hook, 7/8"-1-5/8" (22.2-41.3 mm) Offset	Polished Chrome	13 lb. (5.9kg)
11094000026D	Adjustable Wide-Hook, Flush to 3/4" (0.0-19.1 mm) Offset	Brushed Chrome	10 lb. (4.5 kg)
11094000027D	Adjustable Wide-Hook, 7/8"-1-5/8" (22.2-41.3 mm) Offset	Brushed Chrome	13 lb. (5.9kg)
110940000926	Adjustable Stainless Steel Wide-Hook, Flush to 3/4" (0.0-19.1 mm) Offset	Satin	10 lb. (4.5 kg)
110940000927	Adjustable Stainless Steel Wide-Hook, 7/8"-1-5/8" (22.2-41.3 mm) Offset	Satin	13 lb. (5.9kg)