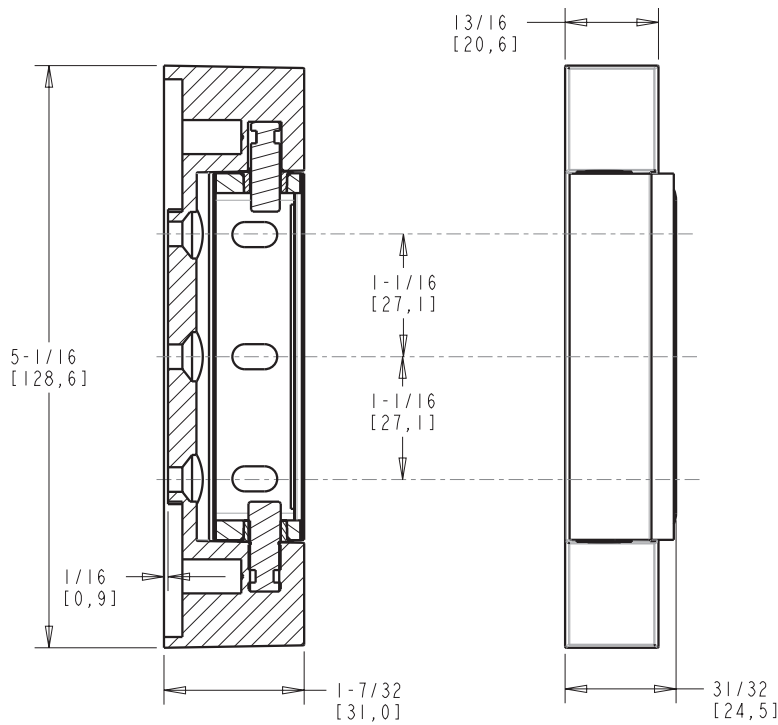


1216-3 NON-RISE ADJUSTABLE HINGE

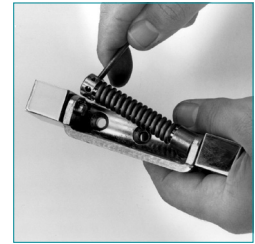


SPRING CARTRIDGE KIT INSTALLATION

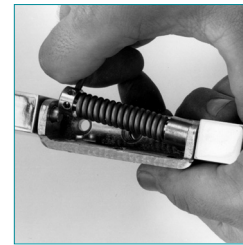
No. 1216 hinge easily converts to spring hinge for self-closing applications.



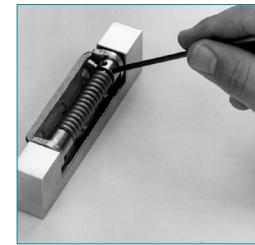
1. Assemble spring cartridge as shown.



2. Slip bushing over hexagon pin on mounted hinge; then insert adjustment pin into adjustment bushing assembly.



3. Grasping adjustment pin, compress spring and place adjustment bushing assembly over round pin.



4. Adjust tension; then insert stop pin in hole of adjustment bushing assembly.

Model No.	Item	Offset
1216000003	Adjustable Hinge	1-5/8" (41.3 mm)
1216000027	Spring Cartridge Kit	

PACKAGING: 20 pair per carton.

WEIGHT: Approx. 30 lb. (13.6 kg) per carton.