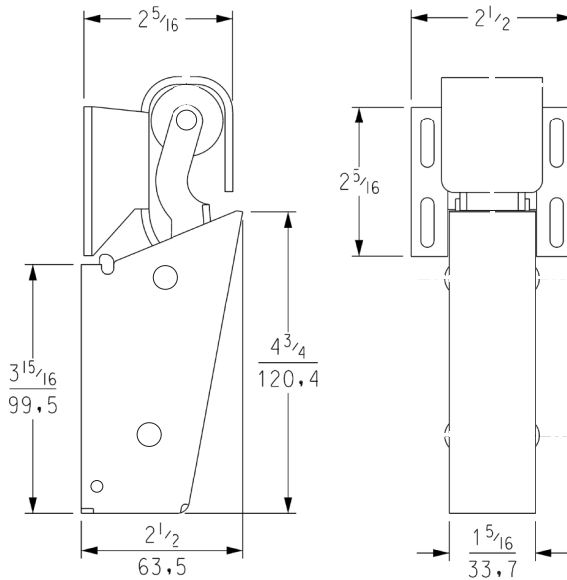


ITEM # 1095



US Patent Number: D-390,442  
Hook sold separately.

## 1095 SPRING ACTION DOOR CLOSER

- Operates by direct force adding to natural swing momentum of closing door
- Designed to overcome slowing action of gaskets and air pressure
- Provides fast, full closure for heavy walk-in doors
- Easy installation; simply snaps onto concealed mounting plate.
- Simple spring mechanism gives long, trouble-free life.
- Steel housing and bend-resistant hook assure long wear in heavy use.
- Polymer roller ensures quiet operation.
- Ideal complement for Kason Walk-in door hardware to provide self-closing doors.

## SPECIFICATIONS

**MATERIAL:**  
Steel housing and mounting plate. Housing and hook also available in stainless steel

**FINISH:**  
Bright chrome. Available in powder coat and stainless steel

**MOUNTING HOLES:**  
Drilled for No. 10 (5.0mm) screws (included)

**PACKAGING:**  
Closers and hooks packaged separately; 24 to carton

**WEIGHT:**  
See order information

Model No.	Item	Wgt/Carton
11095000013	Steel Closer	30.0 lb (13.6 kg)
11094000026	Adjustable Wide-Hook, Flush	10 lb. (4.5kg)
11094000027	Adjustable Wide Hook, Offset	13 lb. (5.9kg)
11094000926	Adjustable <b>Stainless Steel</b> Wide-Hook, Flush to 3/4" (0.0-19.1 mm) Offset	10 lb. (4.5kg)
11094000927	Adjustable <b>Stainless Steel</b> Wide-Hook, 7/8"-1-5/8" (22.2-41.3 mm) Offset	13 lb. (5.9kg)
11095000093	<b>Stainless Steel</b> Closer	30.0 lb (13.6 kg)